

GR5801A

58 Cubic Inch Grease Reservoir

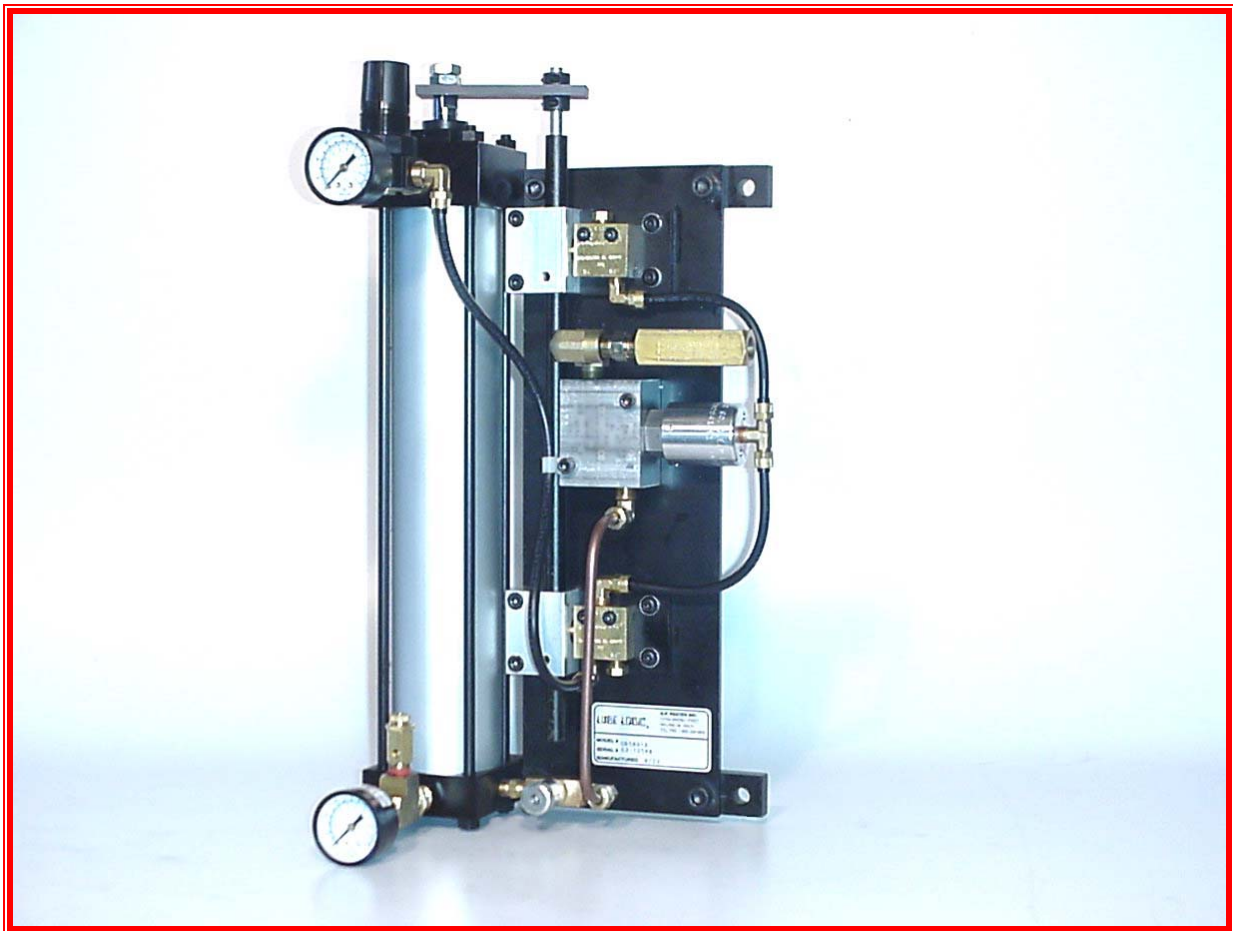
RELIABLE

- Fills automatically from grease pump, canister, or header
- Operates during momentary grease supply interruptions
- Includes grease pressure gauge and relief valve
- Operates on "shop" compressed air
- Shuts off grease pressure when compressed air is OFF

SIMPLE

- Supplies grease at 90% of incoming air pressure
- Regulates grease pressure to less than 100 p.s.i.
- Includes visual indication of fill level and operation
- Includes air pressure regulator and gauge
- Includes wall mounting brackets

CLEAN



G. P. Reeves Inc.
Phone: 888.399.8893

12764 Greenly Street
Fax: 616.399.8867

Holland, MI 49424
Web Site: <http://gpreeves.com>

GREASE RESERVOIR

The GR5801A stores up to 58 cubic inches of grease to allow continued operation even during momentary grease supply interruptions.

MORE THAN A RESERVOIR

The GR5801A also functions as a grease pressure regulator. It can receive grease at up to 1000 p.s.i. and discharge grease at less than 100 p.s.i. This low grease pressure is necessary for grease measuring dispensers such as the KB1453 and KB1453N.

VISUAL INDICATOR

The recommended mounting position is with the piston rod pointed up as shown in the picture. The rod will be extended 12 inches when the reservoir is full.

RELIABLE AND CLEAN

The simple "compressed air over grease piston" design of the GR5801A is more reliable than most grease pressure regulators. The negative boost ratio and normal shop air pressure limitations reduce potential excess grease pressure problems.

LOWER PRESSURE GREASE MINIMIZES SEPARATION

Grease is a combination of oil, thickeners, and solids. Time and pressure can cause these solids and thickeners to separate from the oil. The oil, being lighter, rises to the surface and the heavier particles settle. The low (100 p.s.i. or less) grease pressure of the GR5801A results in less separation.

AUTOMATIC FILL

The GR5801A includes a pneumatic operated fill valve that automatically opens to allow high pressure grease into the reservoir. The fill valve automatically closes when the reservoir is full.

CAUTION

Because low pressure grease doesn't flow very fast or very far, the GR5801A should be located within about three feet of the dispensing components it is supplying. Supply tubing should be sized for maximum flow with minimum restriction.

Specifications

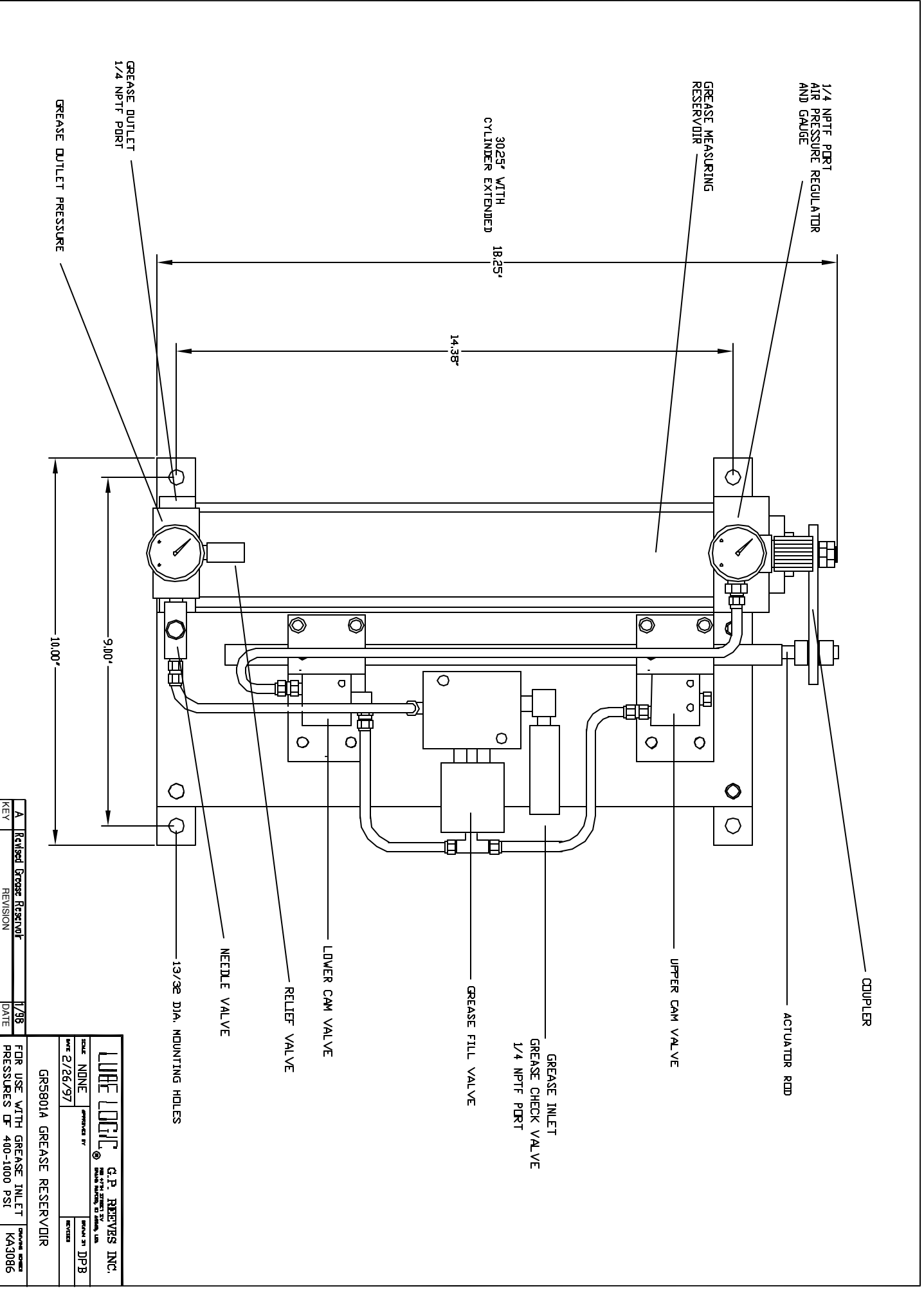
Material Stored and Dispensed	Lubricating oil and Grease compatible with neoprene seals and with a viscosity between 30 and 1,000,000 centipoise.
Boost Ratio	Negative – Grease pressure will be 90% of air pressure
Material Inlet Pressure	1000 p.s.i. maximum 200 p.s.i. minimum
Reservoir size	58 cubic inch (950 cc)
Operating Air Pressure	50 to 110 p.s.i.
Port Sizes	Compressed air, grease in, and grease out ports are ¼ NPT female
Ambient Temperature	50 to 120° F.
Dimensions	See drawing KA3086
Schematic	See drawing KA4575
Shipping Weight	25 lb.

OTHER RESERVOIRS AVAILABLE

APGP (Air Purge Grease Pump) series units have larger reservoirs and are also capable of removing air from grease.

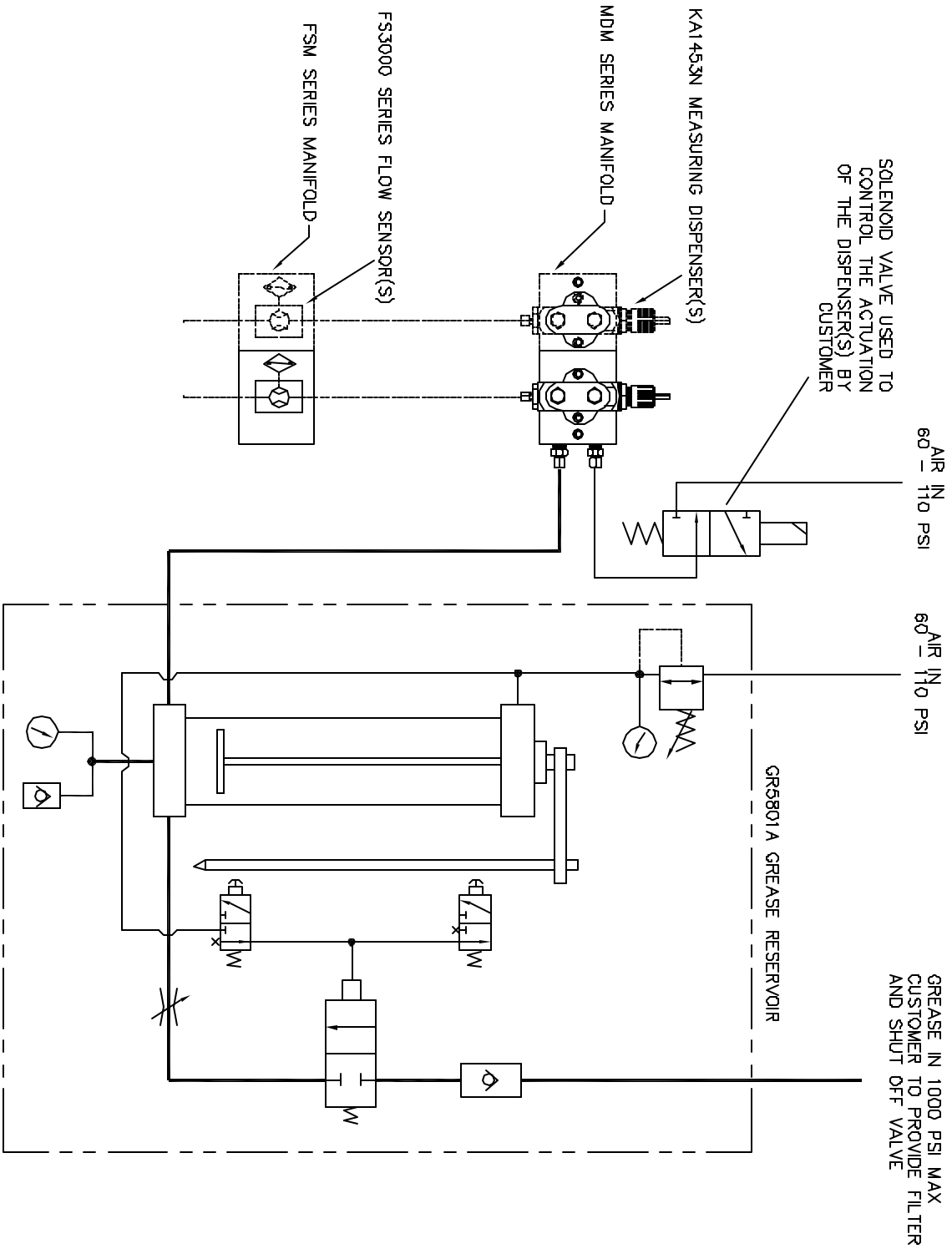
Consult factory for other models.

G. P. Reeves Inc. 12764 Greenly Street Holland, MI 49424
Phone: 888.399.8893 Fax: 616.399.8867 Web Site: <http://gpreeves.com>



KEY	A	Revised Grease Reservoir	1/79B
		REVISION	DATE

LUBE LOGIC G.P. BEBEVERS INC.
1000 W. 21st Street, St. Louis, MO
 SCALE: NONE APPROVED BY: [Signature] REVISED BY: DJP:B
 DATE: 2/26/97
 GR5801A GREASE RESERVOIR
 FOR USE WITH GREASE INLET PRESSURES UP TO 400-1000 PSI
 DRAWING NUMBER: KA3086



NOTE: ALTHOUGH A TWO OUTPUT SYSTEM IS SHOWN, 1-8 MEASURING DISPENSERS/FLOW SENSORS CAN BE USED.

LINE CODE	
AIR SUPPLY	_____
GREASE SUPPLY	_____
METERED GREASE

LUBE LOGIC G.P. REEVES INC. <small>EST. 1973, 2001, 2002, 2003, 2004, 2005, 2006, 2007, 2008, 2009, 2010, 2011, 2012, 2013, 2014, 2015, 2016, 2017, 2018, 2019, 2020, 2021, 2022, 2023, 2024, 2025</small>	
DATE: NONE	APPROVED BY: _____
DATE: 5/07/01	DESIGNED BY: JMH
GREASE DISPENSING SYSTEM WITH ABSOLUTE FLOW SENSING	
HYD./PNEUM. SCHEMATIC	
	DRAWING NUMBER: KA4475